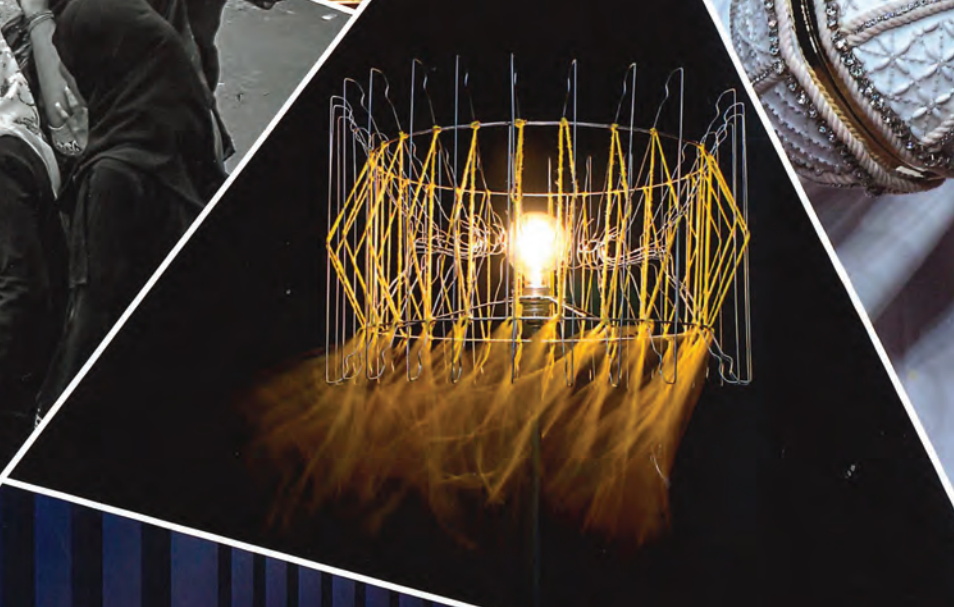


TRENDS

KNOW THE DIFFERENCE



Architecture,
Lopes da Costa
Bauhaus 100 Anos

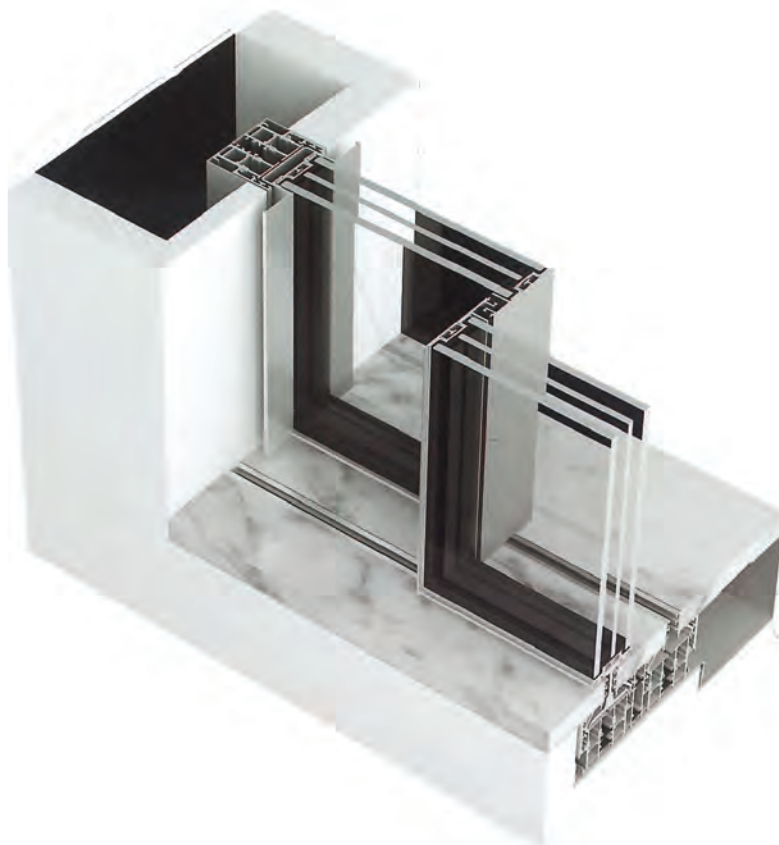
Design,
Mint Interior Design
Ghidini

In style,
Jennifer Brachmann

Motors,
MINI Electric Cooper SE



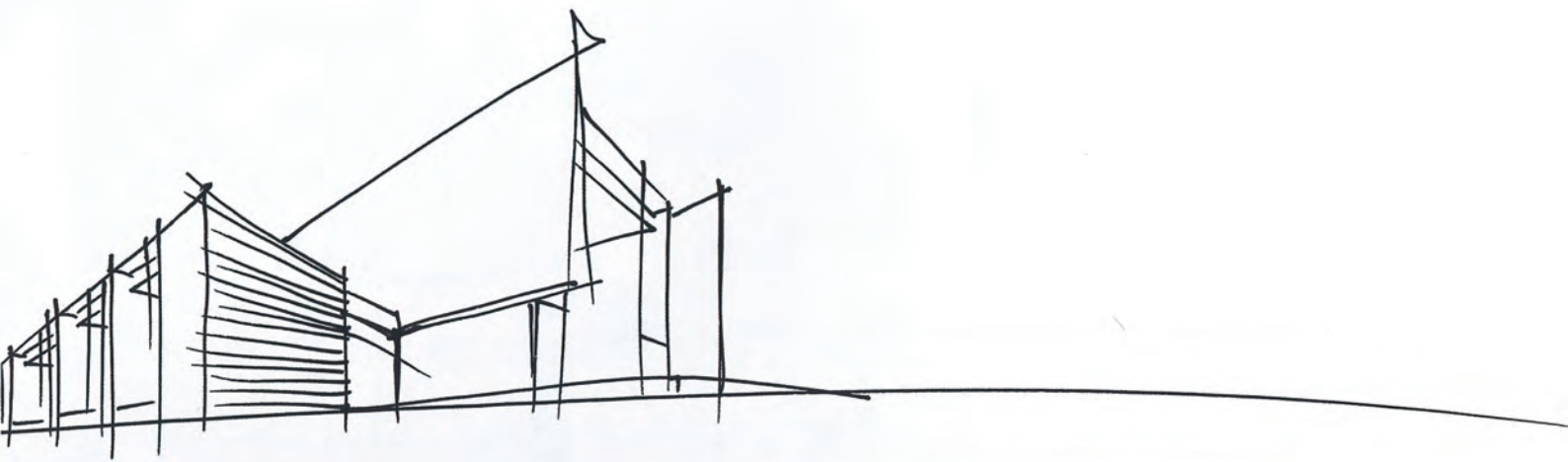




Sistema HYLIN

Nasceu no seio da empresa nortenha BBG, mas foi o seu nome que ganhou protagonismo. Chama-se HYLIN e é um sistema inovador *premium*, um produto modular que se ajusta às especificidades de cada projeto e dá mais possibilidades ao arquiteto e aos sistemas construtivos. O conhecimento adquirido sobre caixilharias de alumínio permitiu ascender a imaginação a patamares elevados. O sistema de piso integrado, de segurança integrada e/ou oculta, a motorização, perfis laterais ocultos e os prumos centrais com apenas 18 mm de vista são fatores preponderantes para o sucesso do produto HYLIN. O vidro está lá, mas não se vê; as caixilharias existem, mas também podem não ser vistas. O visível é o que está para lá do invisível: o que se quis revelar aos olhos, como uma paisagem arrebatadora. A novidade é o sistema HYINV, que consiste em possibilitar o desaparecimento completo da estrutura de alumínio, como se tivesse sido esquecida. Não foi. Interior e exterior dialogam e até se misturam, se a 'parede' translúcida deslizar e deixar o 'mundo' entrar. "O facto de não se ver não quer dizer que não exista!".

It was created at BBG, a company in northern Portugal, but it was its name that took centre stage. It is called HYLIN and it is an innovative premium system, a modular product that adjusts to the specific characteristics of each project and broadens the scope of possibilities for architects and building systems. Knowledge acquired about aluminium frames has enabled imagination to be raised to new levels. The integrated flooring system, with integrated and/or hidden safety systems, motorisation, hidden side profiles and the central uprights with only 18mm in sight are the main factors for the success of the HYLIN product. The glass is there, but you can't see it; the frames are there, but you can't see them either. What is visible is what lies beyond the invisible: what is revealed to the eye, such as a breathtaking landscape. The latest innovation is the HYINV system, which enables the aluminium structure to disappear entirely, as if it has been forgotten. It hasn't. Indoors and outdoors interact and even merge, as the translucent wall slides away, letting the world in. "The fact that you can't see it doesn't mean it doesn't exist!"



with more conditioned areas, the space decompresses into a large, double-height volume featuring the social programme of the house, bringing together a living room, kitchen and dining space under a single ceiling. Although this space enjoys great

transparency, its northeast orientation allows a controlled relationship with natural light. The private area, without explicit divisions, develops with autonomy, twisting all the rooms to the southeast.

WWW.TIAGODOVALE.COM



—HYLINE—

HAVE YOU EVER IMAGINED WAKING UP WITH A VIEW
LIKE THIS? **A VIEW WITHOUT BOUNDARIES.**

WWW.HYLINE-BSI.COM

PORTUGAL - FRANCE - MOROCCO - BELGIUM - NETHERLANDS - LUXEMBOURG - SPAIN - GERMANY
ENGLAND - BRAZIL - PERU - PARAGUAY - USA - CANADA - DUBAI - MONACO - ISRAEL - INDIA